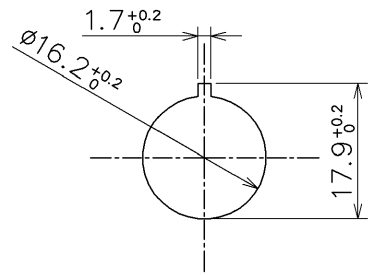
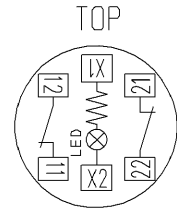


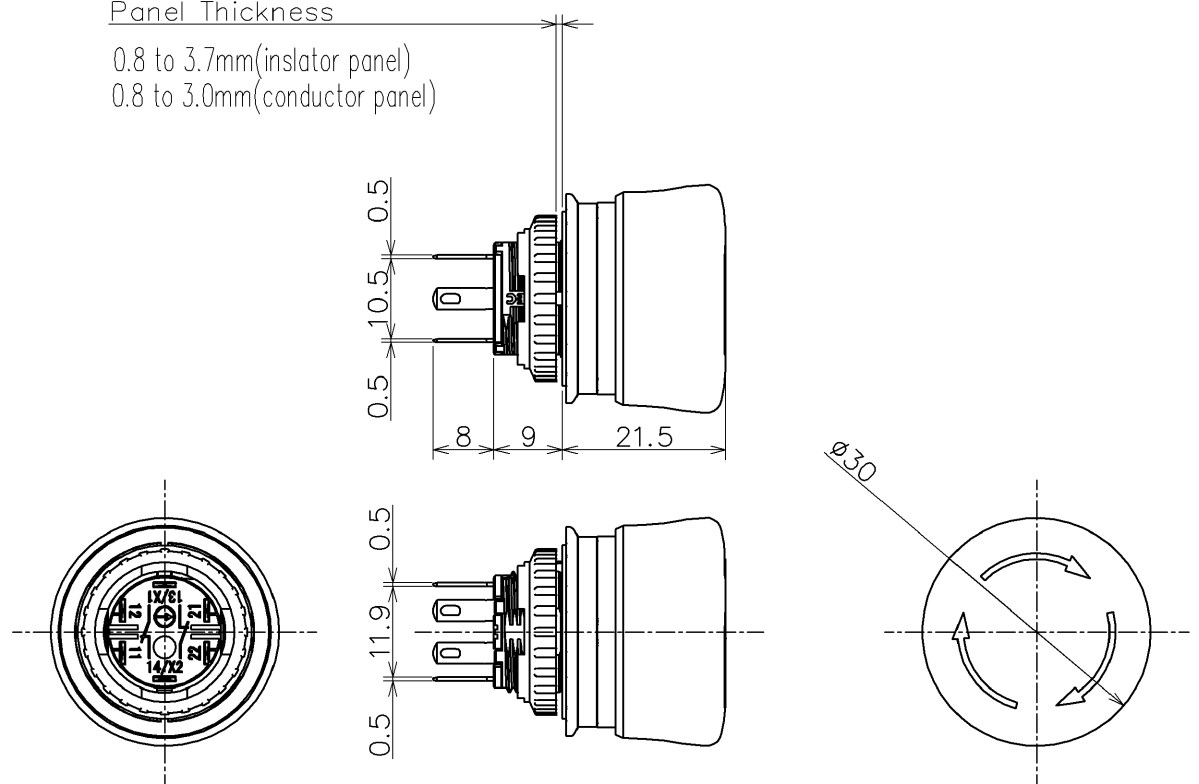
Operation type : Push lock
 Reset : Pull reset or Turn reset.
 Contact arrangement (□□) : 1b (1), bC (2) ,
 Bottom color (*) : White (WR) , Red (R)
 *Illumination color is red
 Built-in LED Ratings (*) : 24V AC/DC



1b: Terminals on the left.
 2b: Terminals on the right and left.

(Bottom View)

Panel Thickness
 0.8 to 3.7mm (insulator panel)
 0.8 to 3.0mm (conductor panel)



				Product Name: XA SERIES EMERGENCY STOP SWITCH
				Type Number: XA1E-LV3SG0□Q4T*
Approved by	T.Iwami	2023/12/01	Dim.: mm	Outside View
Checked by	Y.Kawase	2023/12/01	Drawing No.	
Drawn by	T.Matsumoto	2023/12/01	MA4-H02202	